



MD 60

Box Avenue



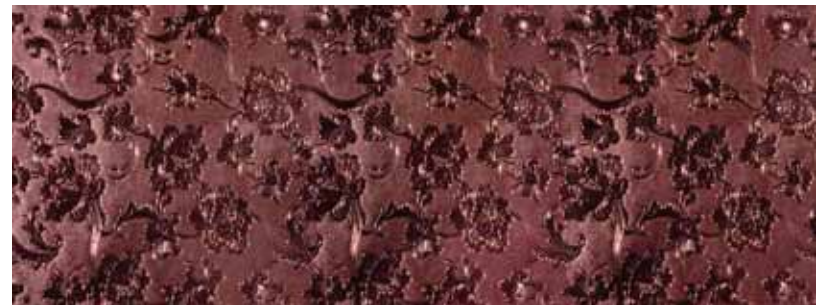
MD 61

Stripes Avenue



MD 62

Silver Flower Glitter

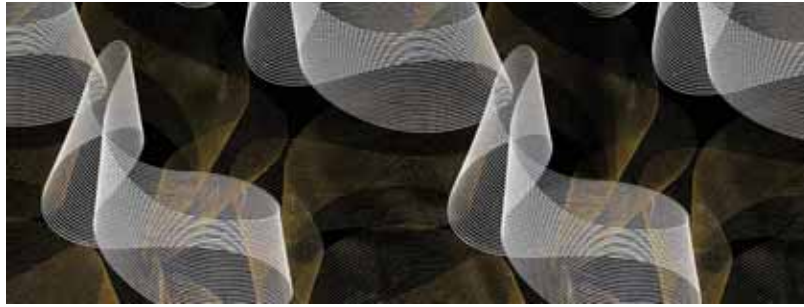


MD 63

Red Flower Glitter

Abstract
Collections

Abstract



MD 64

Eternity Black



MD 67

Rustik Two



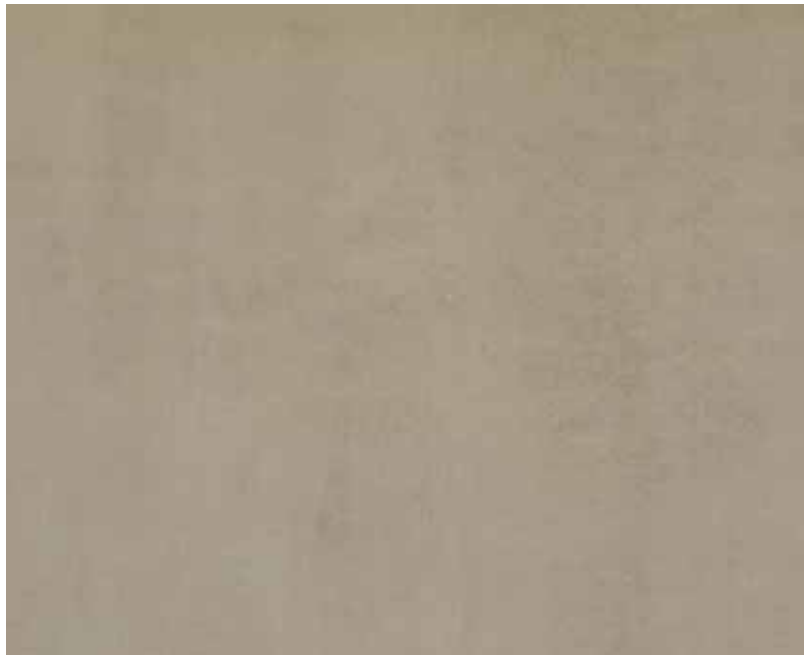
MD 65

Brick Stone Wood



MD 68

Versace Brown



MD 66

Rustik One





MD 69 Versace White



MD 70 Versace Grey



MD 71 Crumple Cement



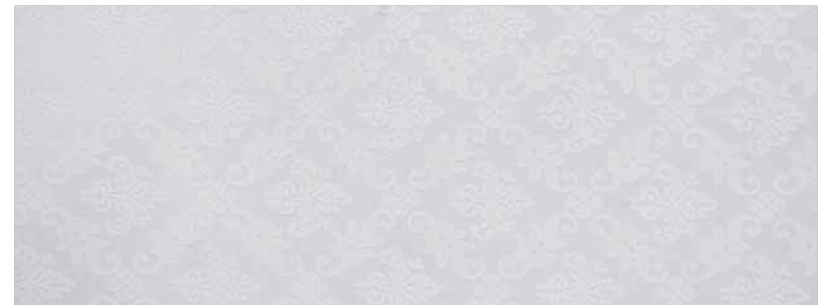
MD 72 Botanical Fantasy White



MD 73 Botanical Fantasy White



MD 74 Botanical Fantasy Brown



MD 75 Misty Dreams White



MD 76 Abstract Geometric Brown



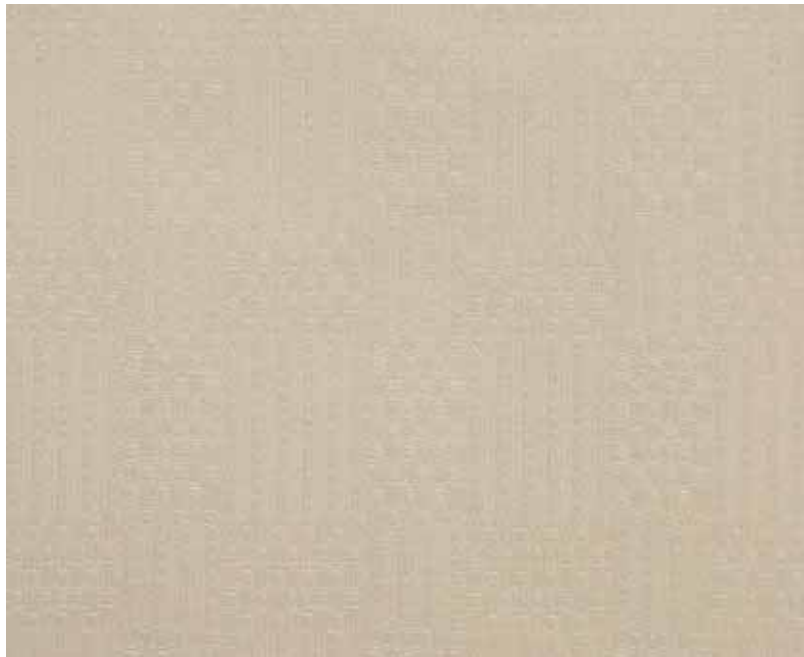
MD 77

Abstract Geometric Ivory



MD 78

Abstract Geometric White



MD 79

Corona Dots



MD 80

Gray Leather



MD 81

Light Brown Leather



MD 82

Dark Brown Leather



MD 85

Allies Micas



MD 86

Frosty White



MD 83

Crocodile Leather



MD 84

Carisma Red





MD 87

Lnn Black



MD 88

Steel Foil



MD 89

Gold Foil



MD 90

Branze Foil



MD 91

Upcoming Shades



MD 92

Upcoming Shades



MD 93

Upcoming Shades



MD 94

Upcoming Shades

Technical Specification

PROPERTIES	1mm Laminate	Wall Cladding	5mm Foam PVC Board	17mm Interior Decorative MDF Panel	18mm Decorative WPC Plywood Panel	18mm WPC Foam Board
Thickness	1mm	3mm	5mm	17mm	18mm	18mm
Size	1220x2440	1220 x 2440	1220 x 2440	1220 x 2440	1220 x 2440	1220 x 2440
Waterproof	✓	✓	✓	✗	✗	✓
Termite Proof	✓	✓	✓	✗	✗	✓
Fire retardant	✓	✓	✓	✗	✗	✓
Calibrated	✓	✓	✓	✓	✓	✓
Stain Resistance	No Effect	No Effect	No Effect	No Effect	No Effect	No Effect
Resistance to Cigarette burn	Moderate Change	Moderate Change	Moderate Change	Moderate Change	Moderate Change	Moderate Change
Design options	OSD	OSD	OSD + BSD	OSD + BSD	OSD + BSD	OSD + BSD
Backside finish	Scratchy	Scratchy	Smooth	Smooth	Smooth	Smooth
Resistance to Scratching	2m (min)	2m (min)	1m	2m (min)	2m (min)	IN
Mechanical Performance	★★★★★	★★★★★	★★★	★★★	★★★	★★★★★
Recyclability	★★★	★★★	★★★	=	=	★★★
Maintenance	★★★	★★★	★★★	★	★	★★★

Product Range



FLOORXTRA

Art of Innovative Design

Choosing a beautiful floor is not just a matter of design and enhancing your interior. As with so many other products, it's a decision that reaches beyond the walls of your home, and that's why we would like to tell you how your new floor is produced.

At Alstone, we have produced a product that is 100% Green & Sustainable product. It has no impact on the environment on every Step of many manufacturing processes and throughout the life cycle of FloorXTRA. The product is produced with homogenous mixing of Poly Vinyl Chloride and rice husk. The top layer and abrasion coating has been sourced from Europe which meets the international emission norms, so now you can enjoy your floors in a XTRA green way.



ALSTONE

WATER PROOF PLY

Alstone, a leading manufacturer of superior quality panel products like ACP, WPC and decorative panel OLIGO, now introducing a revolutionary product which is 10% water proof and termite proof panel. It is manufactured with high quality wood polymer composites which is naturally Termite and Water proof. Not any treatment is required to make it safe against termite and borer like other wood base panels. ALSTONE PLY has a high dimensional stability and it does not warp in changing weather. ALSTONE PLY comes with Life Time Guarantee which is first in India for giving such Guarantee for life time. ALSTONE PLY is 100% Eco friendly because it is manufactured with virgin materials and utmost care is taken during its manufacturing to avoid the any quality related problem.



ALSTONE

HYBRID BOARD(WPC)

Industrial logging of the world's primary forests is rapidly destroying the habitats of thousands of animal and plant species, and depleting our planet of its oxygen reserves.

The situation today is of concern to us all. We need to call a halt to the destructive exploitation of hardwoods responsible for this widespread deforestation.



ALSTONE CHAUKHAT

101% WATER & TERMITE PROOF WPC DOOR FRAME

Frame your door with the authentic beauty and strength of ALSTONE CHAUKHAT, the revolutionary door frame manufactured with wood polymer composite material. ALSTONE door frames are durable, low maintenance & ready to use. Unlike other wooden or other kind of door frame it is 10% water and termite proof panel and it is perfect choice for outdoor as well as indoor door framing.

ALSTONE CHAUKHAT designs blend beautifully with your home interior and exterior finishes. The exclusive innovations provide exceptional protection from drafts and leaks making your door stay looking new for years.



ALSTONE PVC DOOR

WELCOME TO ALSTONE'S WORLD OF DOORS.

To overcome with all the drawback of exiting door in the market ALSTONE introduces the WPC decorative doors that look as beautiful as real wood but assured the performance just like durability of steel.

ALSTONE decorative doors are new innovation in industry with unmatched features that you can expect from the nation's leading manufacturer and India's most preferred brand. We are a company that is committed to provide you unique quality products time to time which are completely different and incomparable from all the existing products available in the market.



WPC ART IN INTERIORS & FAÇADE:

WPC art or jali as it is commonly called is a great option of creating an illuminating, light and attractive wall partitions, false ceilings, cabinets, mirror art. For exterior facades, wpc art can be used as it is and yet gives an ethereal appeal to your outdoor finish. No need of paint and covering it to protect its finish and life from the harsh effects of weather, termite & fire.



A2A STIXALL

(सोसाइड, विपकसुट, कूल जॉइंट)

- Bonding of Mirror.
- Bonding of stone, concrete, poly carbonate, fiber glass etc.
- Bonding of bathroom fittings, kitchen fittings etc.

ALSTONE

Multi Decor

90° Bendable Etched PVC Laminate