

NEW



AQUASYS LIGHT MIRROR

MULTI-FUNCTIONAL CONVENIENCE

ABOUT

Give your designs the perfect touch in the bath, vanity or closet areas with Häfele's New Aquasys Light Mirror. Beautifully designed, the mirror adds value, functionality and style to any interior space.

The versatile mirror comes fully assembled and unites the functions of make-up lighting, room lighting, mood lighting, demister (prevents condensation on the mirror during and after a shower) and sound system in an elegant design.

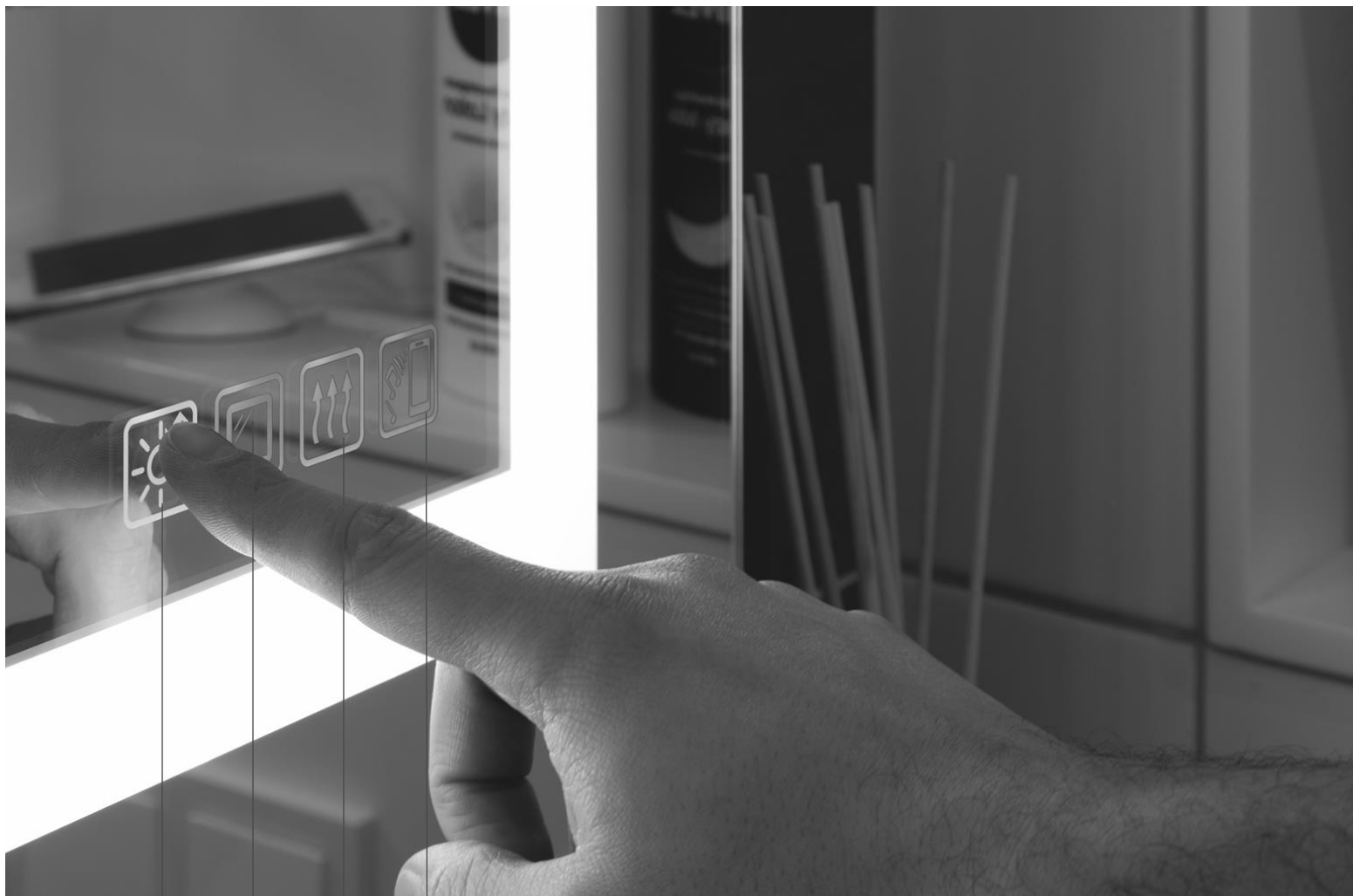
The front light, in natural and warm white, equipped with a memory function offers excellent colour trueness that exceeds the market colour rendering indexes making it very suitable as a make-up light. All functions are controlled via touch keys that are integrated into the mirror.

The easy-to-install, IP44-rated mirror comes fully-assembled with a mounting track for installation. With the option to rotate the mirror by 90 degrees, it's the perfect fit for any interior décor or style.

This product communication takes you through the details of Häfele's New Aquasys Light Mirror as well as its product and technical specifications.



FEATURES



Bluetooth Capable Transducer System

- Plays music from your mobile on the sound system integrated into the mirror



Demister (Mirror Heater)

- Prevents the mirror from fogging up



Background Lighting

- Functions as a source of mood and ambient lighting
- Operates independently from the Front Lighting



Front Lighting

- Offers adjustable lighting option, from warm white to natural white
- Creates desired ambience from relaxing to invigorating
- Comes equipped with a memory function

FUNCTIONALITY

1. Front Lighting



- The front lighting in the Aquasys Light Mirror can be adjusted from Warm White (2700 K) which imparts a relaxing, spa-like aura to your interiors to Natural White (4000 K) which is ideal for applying make-up and getting ready
- The switch needs to be pressed for 1.5 - 2 seconds for the mirror to change light between the two colours
- The mirror comes equipped with a memory function where it remembers the last light colour selected by you and brings that colour up when restarted
- The high quality front lighting (CRI >90) offers a realistic perception which is perfect for applying make-up and use in the vanity area. The brightness also helps prevent the creation of shadows caused by the overhead ceiling lights



2. Background Lighting

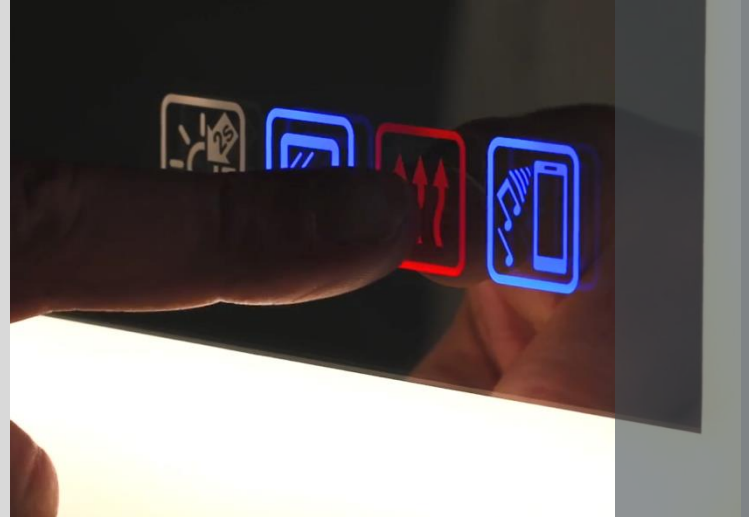


- The background lighting, Warm White (2700 K), adds the much needed zing and drama to enhance the Aquasys Light Mirror and a dimension of style and aesthetics to match the individualist grace of your homes
- The high quality lighting (CRI >90) augments the interior décor and complements the traditional walls of your homes effectively



FUNCTIONALITY

3. Demister (Mirror Heater)

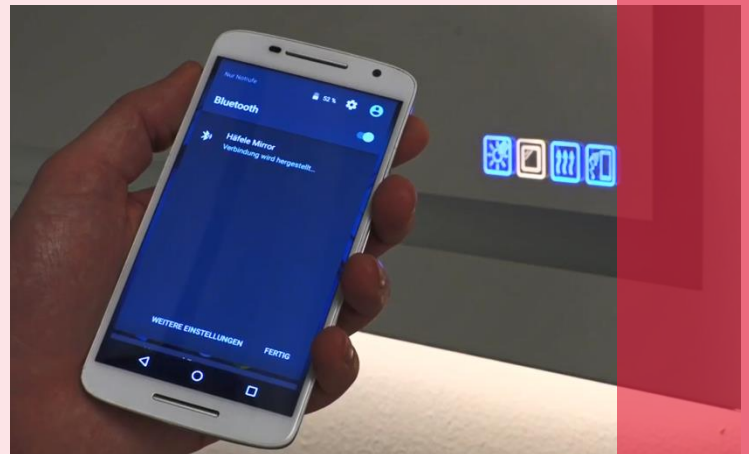
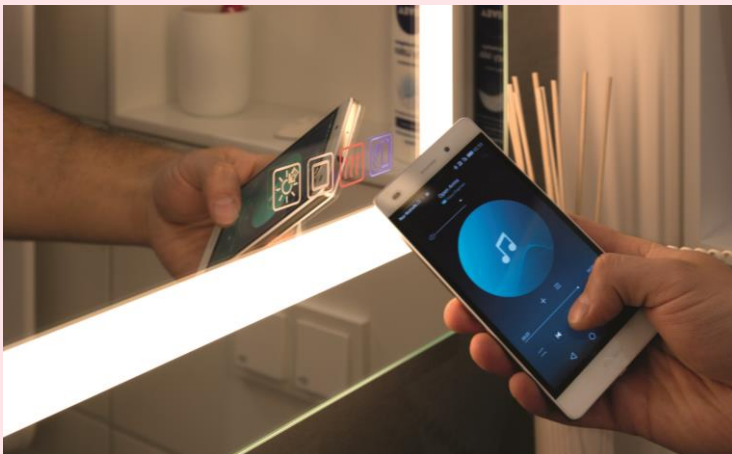


- The demister built inside the Aquasys Light Mirror heats up the glass surface to a temperature high enough to prevent the hot humid air from hot showers to condensate on the cold mirror glass surface
- It goes on an automatic stand-by after staying active for 45 minutes in order to save energy

Please Note: The mirror heater does not replace room heating



4. Bluetooth Capable Transducer System



- The mirror connects to your smartphone via Bluetooth (Device Name: Häfele Mirror); all you need to do is enter the set password (Password : 0000)
- The mirror can save up to 2 users in its system and only one user can stay connected to the mirror at a time. The connection distance works up to 3-6 meters depending on wall construction
- The latest user will automatically connect to the mirror once in range, while the second user will have to connect manually after the latest user switches off his / her smartphone Bluetooth
- When a third user connects to the mirror, the first user will automatically get deleted from the system
- The inbuilt Transducer system transforms the whole mirror into a sound speaker to amplify the volume and the acoustic material inside the mirror together with the wooden back plate further improve the sound performance



SIZE VARIANTS & PRODUCT SPECIFICATIONS

Size Variants and Dimensions



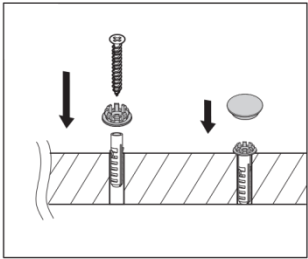
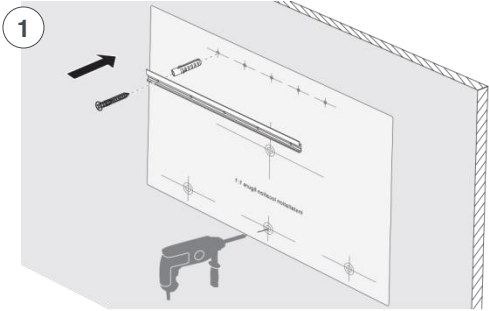
Product Specifications

Article No.	983.19.010	983.19.020	983.19.030
Dimensions (W x H x D):	900 x 600 x 54 mm	900 x 900 x 54 mm	1200 x 900 x 54 mm
Colour Temperature:	Warm White (2700K) & Natural White (4000K)		
• Front Lighting	Warm White (2700K)		
• Back Lighting			
Front Lighting Lumen Output:			
• Warm White	1080 Lm	1300 Lm	1560 Lm
• Cool White	1230 Lm	1470 Lm	1764 Lm
Colour Rendering Index:	> 90	> 90	> 90
Wattage:	95 W	102 W	111 W
Lux @ 70 cm (luminous Flux / Area):	500		
Demister (Mirror Heater):	Standby after 45 minutes		
Sound System:	Bluetooth Transducer System (Password – 0000)		
Bluetooth Frequency:	2.4 GHz		
Nominal Voltage:	DC 12 V		
Input Voltage:	100-240 V; 50-60 Hz		
Material:	LED Profile – Aluminium; Rear Back Plate – Wood		
Switch Type:	Touch LED Illuminated (Operation – Warm White, Stand-by – Blue)		
Degree of Protection:	IP 44 (Splash-proof for use in wet rooms)		
Warranty:	2 Years		
Energy Efficiency Class:	A		
Certification:	UL / CUL / SAA / CE / TÜV certified as per EN 1036-1:2007 against corrosion resistance		

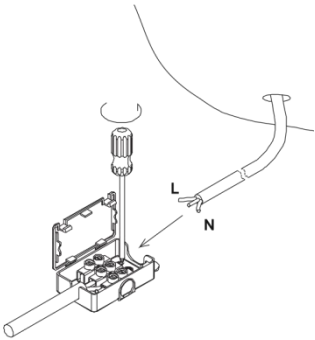
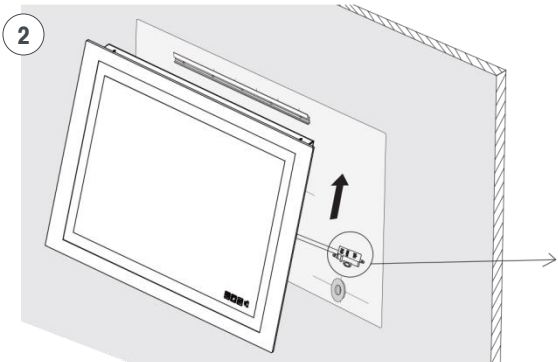
Please Note: This mirror contains integrated LED lights which cannot be replaced. Once the LED lights reach the end of their life and the warranty period is over, the whole mirror will have to be replaced.

INSTALLATION DETAILS & ORDERING INFORMATION

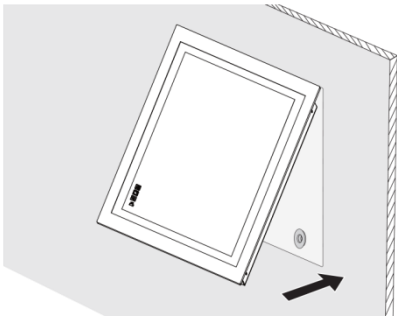
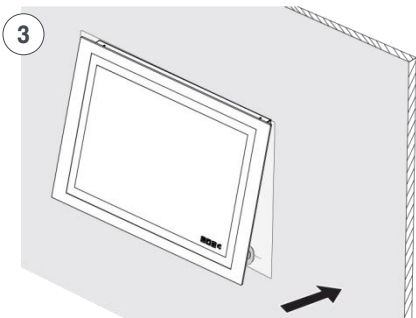
Installation Details



- Drill holes of $\varnothing 8$ mm as demonstrated in the drilling template and insert wall plugs into them
- Place the mounting profile parallel to the drilled holes and drill in the screws through the cover cap adapters and the mounting profile
- Once the profile is installed in position, fix the cover caps on top of the cover cap adapters



- Open the end terminal cap to connect the Live, Neutral & Earth wires
- Once connected, the end terminal box can be concealed or recessed into the wall or any furniture surface near the mirror.

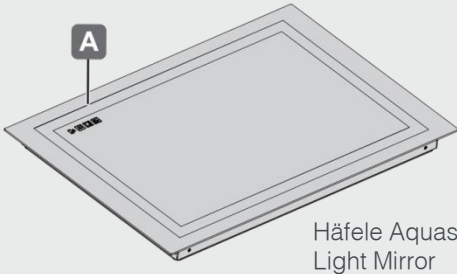


- Hook on the mirror either horizontally or vertically onto the mounting profile

Ordering Information

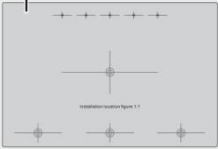
Article Number	Description	Dimensions	MRP (INR)
983.19.010	Aquasys Light Mirror	900 (W) x 600 (H) x 54 (D) mm	64,990/-
983.19.020	Aquasys Light Mirror	900 (W) x 900 (H) x 54 (D) mm	79,990/-
983.19.030	Aquasys Light Mirror	1200 (W) x 900 (H) x 54 (D) mm	89,990/-

Components



Häfele Aquasys Light Mirror

B Drilling Template

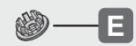


C Mounting Profile



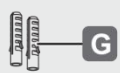
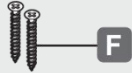
Cover Caps

Cover Cap Adapters



Screws

Wall Plugs



No. of components supplied with each article no.:

	A	B	C	D	E	F	G
983.19.010	1	1	1	3	3	8	8
983.19.020	1	1	1	3	3	8	8
983.19.030	1	1	1	5	5	12	12

HÄFELE

Häfele India Private Limited | Office No. 3, Building “A”, BETA, I Think Techno Campus, Off J.V.L.R, Opp. Kanjurmarg East, Mumbai – 400 042. | Tel.: 022 6142 6100 | Fax: 022 6702 0531

New Delhi | Kolkata | Chennai | Hyderabad | Bangalore | Pune | Ahmedabad | Srilanka | Bangladesh | Nepal

Toll Free Customer Care No.:1800 266 6667 | SMS HAFELE to 56070 | customercare@hafeleindia.com

www.hafeleindia.com