

New benchmarks in the kitchen

# High-quality materials stainless steel and granite SilicaTec

Granite sinks in SilicaTec have been added to complement our stainless steel range. SilicaTec is the material of the future and its warm looks bring natural colours into the

kitchen. This welcoming character generates a feel-good atmosphere that resonates with today's trend for integrating kitchen and living areas. For even more individuality, SilicaTec

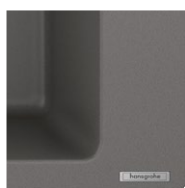
is available in three colours, allowing colour accents to be added to the kitchen design.



stainless steel  
-800



graphite black  
-170



stone grey  
-290



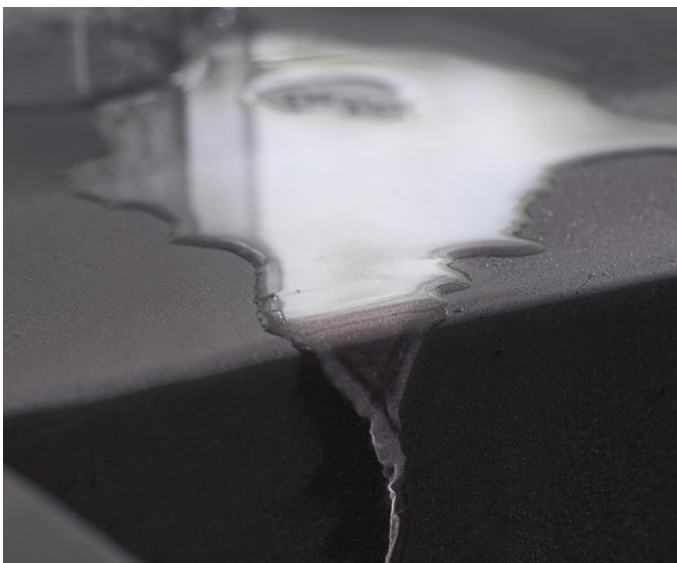
concrete grey  
-380



**Exclusive:** 1 mm thick hand-welded stainless steel sinks shine with their precision edges and 10mm corner radii.



**Durable:** Manufactured using edge-rounded quartz particles from Germany for a tough, hard surface.



**Pearling effect:** Thanks to its smooth, non-porous surface, water simply rolls off.



**Natural:** The material is pleasing to the touch and feels very natural.

All eyes on the kitchen

# Size and installation options for any kitchen

With a choice of bowl shapes including small, elongated or double and the various installation options, there is plenty of freedom

to design a completely individual kitchen. Having the drainer on the left gives an option to extend the working area. The large bowls

are ideal for filling and cleaning bulky items while a double sink makes it possible to carry out several tasks at the same time.



**Surface-mounted installation:**

The sink is inserted from above into a hole cut in the worktop.



**Flush-fit installation:**

The sink is fitted flush to the worktop, providing the seamless transition between sink and worktop that is only possible with stainless steel sinks.



**Under-mounted installation:**

The sink is attached to the worktop from below. This makes the kitchen more spacious.



**Single bowl:** Suitable for base units from 80 cm with a bowl width of approx. 66 cm and for base units from 60 cm with a bowl width of approx. 45 cm (not shown).



**Double bowls:**

Suitable for base units from 80 cm with a bowl width of approx. 18cm and approx. 45 cm.



**Double bowls:**

Suitable for base units from 90 cm with each bowl width approx. 37 cm.



**Single bowl with drainer:**

Suitable for base units from 60 cm with a bowl width of approx. 45 cm.