



AISI 304
18/8 STEEL

RUST
PROOF

LIFETIME
WARRANTY
on select models

GLOSS • MATT
FINISHES
ANTI-SCRATCH

100%
Non-Magnetic

Featuring above is PARKER series shower channel

Art is the visual expression of design. Jayna shower channels offer a more artistic solution to shower drainage, taking the design to an even higher form. These high-quality channels meet all the practical, aesthetic and functional demands of today's contemporary showers and wet rooms. The channels meet the relevant sound insulation requirements, providing more peace and quiet in your home.

Jayna shower channels are available in various models. Each model comes in different lengths. These channels are specially designed for your requirements.

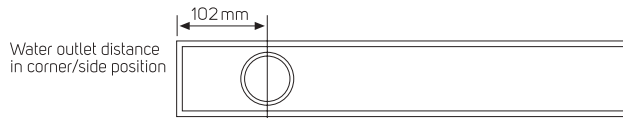
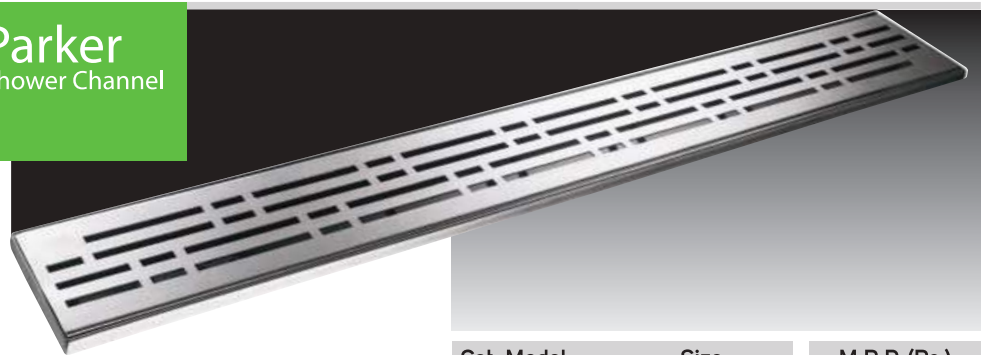
Thanks to sophisticated technology and intelligent details, plumbers can easily install these. Discover the exclusive world of JAYNA.

CUTTING EDGE FEATURES

- Easy to install and clean
- No more insect menace
- Prevents choking of drain and bad odour
- Ideal for bathrooms, homes, malls, hotels...
- Sizes available from 300 mm to 1000 mm and above
- **Customised sizes also available as per requirement**
- Drainer is provided along with each Shower Channel

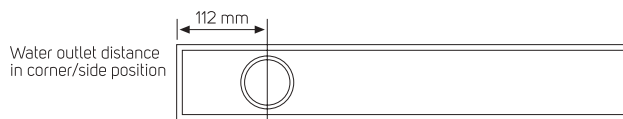
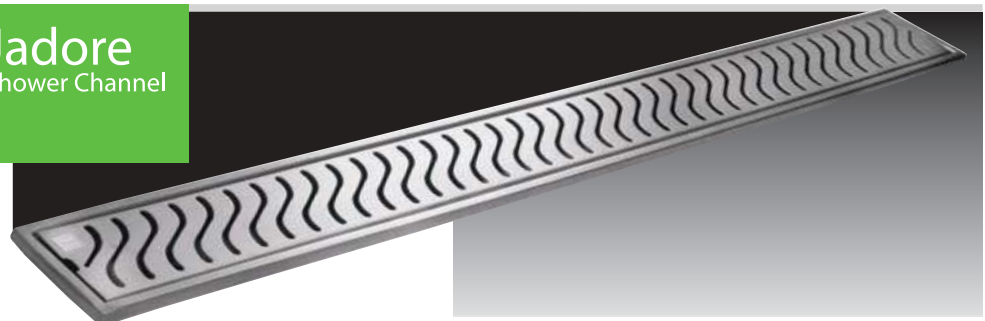


Parker
Shower Channel



Cat. Model	Size	M.R.P. (Rs.)
		Matt
PSC 01	62 x 300 x 25 mm	4430/-
PSC 02	62 x 450 x 25 mm	5130/-
PSC 03	62 x 600 x 25 mm	5780/-
PSC 04	62 x 750 x 25 mm	6630/-
PSC 05	62 x 1000 x 25 mm	7630/-
PSC 06	82 x 300 x 25 mm	4980/-
PSC 07	82 x 450 x 25 mm	5730/-
PSC 08	82 x 600 x 25 mm	6480/-
PSC 09	82 x 750 x 25 mm	7330/-
PSC 10	82 x 1000 x 25 mm	8430/-

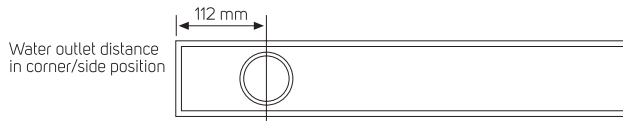
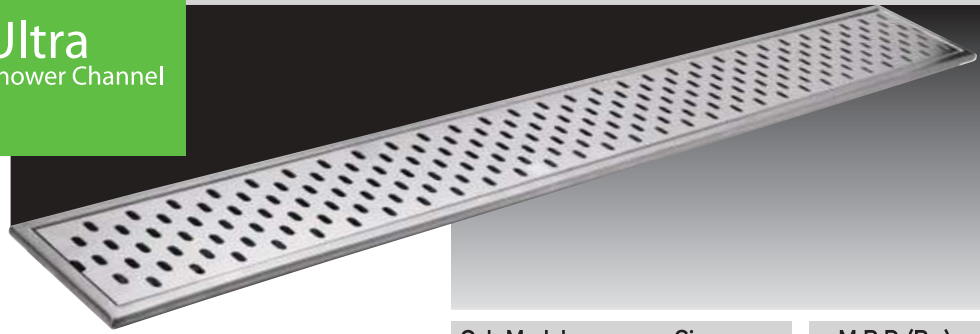
Jadore
Shower Channel



Cat. Model	Size	M.R.P. (Rs.)
		Matt
JSC 01	100 x 300 x 30 mm	4550/-
JSC 02	100 x 450 x 30 mm	5250/-
JSC 03	100 x 600 x 30 mm	5950/-
JSC 04	100 x 800 x 30 mm	6750/-
JSC 05	100 x 1000 x 30 mm	7750/-

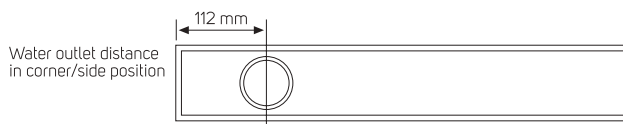
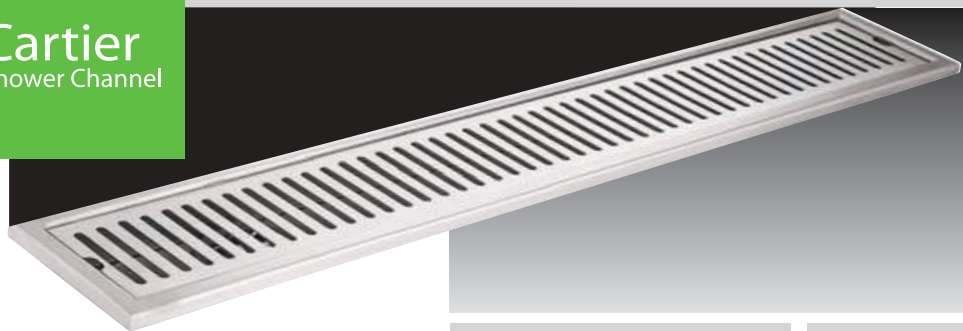
SHOWER CHANNELS

Ultra Shower Channel

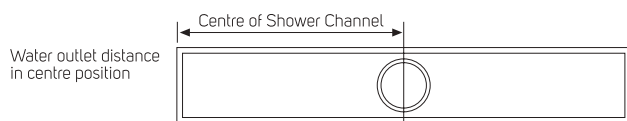


Cat. Model	Size	M.R.P. (Rs.)
		Matt
USC 01	125 x 300 x 30 mm	4900/-
USC 02	125 x 450 x 30 mm	5700/-
USC 03	125 x 600 x 30 mm	6400/-
USC 04	125 x 800 x 30 mm	7200/-
USC 05	125 x 1000 x 30 mm	8200/-

Cartier Shower Channel



Cat. Model	Size	M.R.P. (Rs.)
		Matt
CSC 01	80 x 300 x 30 mm	4100/-
CSC 02	80 x 450 x 30 mm	4750/-
CSC 03	80 x 600 x 30 mm	5350/-
CSC 04	80 x 800 x 30 mm	6150/-
CSC 05	80 x 1000 x 30 mm	7050/-
CSC 06	100 x 300 x 30 mm	4550/-
CSC 07	100 x 450 x 30 mm	5250/-
CSC 08	100 x 600 x 30 mm	5950/-
CSC 09	100 x 800 x 30 mm	6750/-
CSC 10	100 x 1000 x 30 mm	7750/-
CSC 11	125 x 300 x 30 mm	4900/-
CSC 12	125 x 450 x 30 mm	5700/-
CSC 13	125 x 600 x 30 mm	6400/-
CSC 14	125 x 800 x 30 mm	7200/-
CSC 15	125 x 1000 x 30 mm	8200/-



Water Drainer

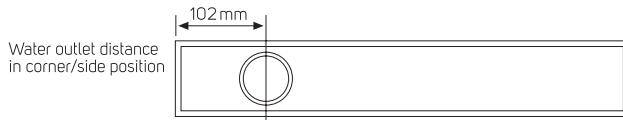
Each shower channel is fitted with AISI-304 (18/8) grade stainless steel Water Drainer. It gives freedom from insects, cockroaches and bad odour.

Made from high grade AISI-304 (18/8) Stainless Steel (18% Chrome, 8% Nickel)

Arden

Rectangular
Tile insert Channel

2.5 mm thickness



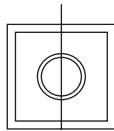
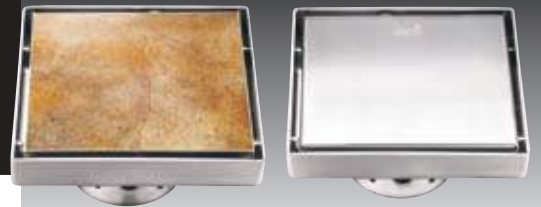
Cat. Model	Size	M.R.P. (Rs.)
		Matt
ASC 01	100 x 200 x 22 mm	4500/-
ASC 02	100 x 300 x 22 mm	6200/-
ASC 03	100 x 450 x 22 mm	7500/-
ASC 04	100 x 600 x 22 mm	8500/-
ASC 05	100 x 800 x 22 mm	9500/-
ASC 05A	100 x 1000 x 22 mm	10800/-



Arden

Square
Tile insert Channel

2.5 mm thickness



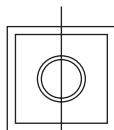
Cat. Model	Size	M.R.P. (Rs.)
		Matt
ASC 06	102 x 102 x 20 mm	2050/-
ASC 07	125 x 125 x 20 mm	2250/-
ASC 08	150 x 150 x 20 mm	2850/-
ASC 09	200 x 200 x 20 mm	5250/-



Dazzle

Square
Tile insert Channel

1 mm thickness



Cat. Model	Size	M.R.P. (Rs.)
		Matt
DSC 01	125 x 125 x 20 mm	1500/-
DSC 02	150 x 150 x 20 mm	1800/-

Note:

- Standard position of the Water Outlet in all shower channels is in corner (as shown in the diagram/picture) except size/length upto 300 (mm) & Cat. Model JSC-01, USC-01, CSC-01, CSC-06, CSC-11, ASC-01, ASC-02, PSC-01 & PSC-02 respt.
- In Cat. Model JSC-01, USC-01, CSC-01, CSC-06, CSC-12, ASC-01 & ASC-02 water outlet hole is provided in centre only.
- Water Outlet hole can also be provided in centre as per your requirement / demand except (size /length upto 300 mm & above mentioned Cat. Models).

Made from high grade AISI-304 (18/8) Stainless Steel (18% Chrome, 8% Nickel)