



SANITARY ESSENTIALS

Jayna

NEW
SERIES



Sanitary Essentials ▶

AISI 304 | RUST | 100%
18/8 STEEL | PEOOF | Non-Magnetic

Sanitaryware at public places is exposed to heavy usage and high maintenance. Jayna Provides durable products crafted in 1 mm and 1.2 mm stainless steel thickness for sustainable use.

The urinals, troughs, basins & washing table are available in different designs and varied sizes and are easy to clean and maintain for everyday use.

“

BUILT
TO LAST





Commercial Sink

- Thickness: 1.2 mm
- Overall Dimension: 1600 x 510 x 475 mm
- Bowl Dimension: 350 x 400 x 225 mm
- Mixer Hole: Two 35 mm
- Rear Splashback: Included

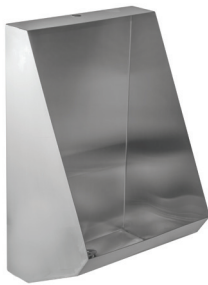
DIMENSIONS		MRP (₹)
Cat. Model	Overall Size (mm)	Matt
JCS 01	1600 x 510 x 475	38,500



Hand Wash Trough

- Thickness: 1.2 mm
- Overall Width: 420 mm
- Overall Height: 350 mm
- Overall Length: 900 mm
- Type of Mounting: Wall Mounting
- Waste Size: 50 mm
- Rear Splashback: Included

DIMENSIONS		MRP (₹)
Cat. Model	Overall Size (mm)	Matt
HWT 01	900 mm	20,500
HWT 02	1200 mm	27,500



Urinal Pod

- Thickness: 1.2 mm
- Overall Height: 550 mm
- Overall Width: 350 mm
- Type of Mounting: Wall Mounting
- Waste Size: 50 mm
- Water Inlet: Exposed
- Water Outlet: Concealed
- Water Spreader: 1/2" included

DIMENSIONS		MRP (₹)
Cat. Model	Overall Size (mm)	Matt
SUP 01	350 mm	9,500



Urinal

- Thickness: 1.2 mm
- Overall Width: 235 mm
- Overall Height: 650 mm
- Overall Length: 1200 mm
- Type of Mounting: Wall Mounting
- Waste Size: 46 mm
- Water Inlet: Exposed
- Water Outlet: Concealed
- Exposed Sparge Pipe: Included

DIMENSIONS		MRP (₹)
Cat. Model	Overall Size (mm)	Matt
MUP 01	900 mm	31,500
MUP 02	1200 mm	41,500
MUP 03	1500 mm	51,500
MUP 04	1800 mm	62,250



Hand Wash Basin (Hospital Use)

- Thickness: 1.2 mm
- Operation: Knee Operated Basin
- Rear Splashback: Included
- Type of Mounting: Wall Mounting
- Overall Dimension: 400 x 320 x 505 mm
- Drainage: Included

DIMENSIONS		MRP (₹)
Cat. Model	Overall Size (mm)	Matt
HWB 01	400 x 320 x 505	18,500



Tissue Dispenser Box

- Thickness: 1.2 mm
- Type of Mounting: Wall Mounting
- Overall Dimension: 440 x 205 x 1520 mm
- Waste receptacle : Included

DIMENSIONS		MRP (₹)
Cat. Model	Overall Size (mm)	Matt
TDB 01	440 x 205 x 1520	40,600

**Customization possible for bulk orders on request