
RAUVARIO PLINTH SYSTEMS

Product series overview



RAUVARIO plinth systems form the basis for modern kitchen design. They are both functional and decorative elements for any kitchen, comprising, Plinth covers, 90° corner, 180° corners, end caps and plinth sealing profiles.

Attention to detail is an important part of kitchen design. Gone are the days when a range of components with different surface finishes had to be painstakingly matched to one another. REHAU's metallic design-match concept enables you to work with and accentuate uniform surface finishes. Whether this is aluminium or uni color white, silver, black as REHAU offers real value. From Tambour to plinths, we always provide you with the best of both worlds. The functionality and process ability of polymer is combined with the aesthetic appeal and tactile characteristics of aluminium.

CONTENTS

<u>Overview of benefits</u>	<u>4</u>
<u>RAUVARIO plinth systems</u>	<u>2</u>
Nominal height 100 mm	5
Nominal height 150 mm	6
Accessories	6



RAUVARIO

Overview of benefits

RAUVARIO plinth systems have served as the basis for modern kitchen design for almost two decades.



Snap fitted clips for plinth cover used for quick and easy fastening.



Watertight sealing lip provides reliable Protection against moisture and dirt



Two nominal heights Coordinated With the kitchen design:
100 and 150 mm

RAUVARIO PLINGTH SYSTEM

Nominal height 100mm

Plinth covers are the functional and decorative elements for every interior. It has a hollow chambered profile with soft transparent sealing lip that creates a reliable barrier against dirt and moisture.

Function:

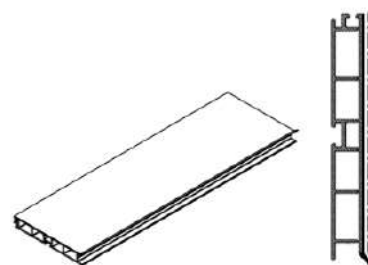
Protect against moisture and dirt ingressed underneath the cabinets hides the leg and thus improves the aesthetics

Size available:

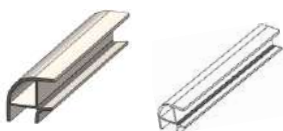
- 100mm
- 150mm

Colors Available:

- Black
- Silver
- White
- Aluminium



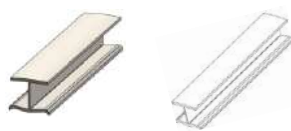
Article No. Plinth cover 100mm	Color Description
304516-013	Black
304516-002	Silver
304516-014	White
317900-002	Aluminium



Article No. Plinth connector 90°	Color Description
306829-008	Black
306829-009	Silver
306829-010	White
317898-002	Aluminium

Function:

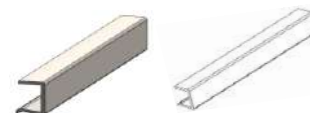
Matching connectors for plinth cover to ensure proper sealing at 90°



Article No. Plinth connector Straight	Color Description
306839-004	Black
306839-009	Silver
306839-010	White
317896-002	Aluminium

Function:

Matching connectors for plinth cover to ensure proper sealing at 180°

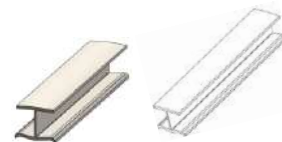
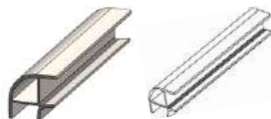
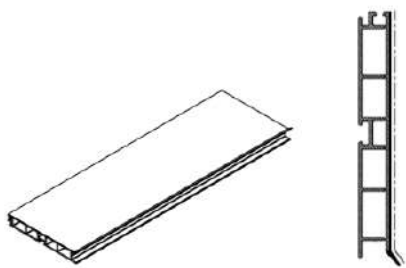


End Cap	Color Description
306837-008	Black
306837-009	Silver
306837-010	White

Function:

Conceals cross section of plinth cover.

RAUVARIO PLINTH SYSTEM



Article No.	Color
Plinth cover	Description
150mm	
317899-002	Aluminium

Article No.	Color
Plinth connector 90°	Description
317897-002	Aluminium

Article No.	Color
Plinth connector straight	Description
317895-002	Aluminium

Function:

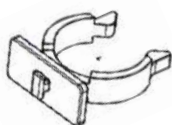
Matching connectors for plinth cover to ensure proper sealing at 90°

Function:

Matching connectors for plinth cover to ensure proper sealing at 180°

RAUVARIO PLINTH SYSTEM

Accessories



Article No.	Color
Snap fitting	Description
315786-001	Black

Article No.	Color
Plinth flap	Description
314082-001	Black

REHAU Snap Fitting

Function:

Snap fit clip is used as a connector between leg and plinth cover. It makes the installation of plinth cover easier.

REHAU Plinth flap

Function:

Plinth flap maintains the engagement of lip with ground that creates a reliable barrier against dirt and moisture.

